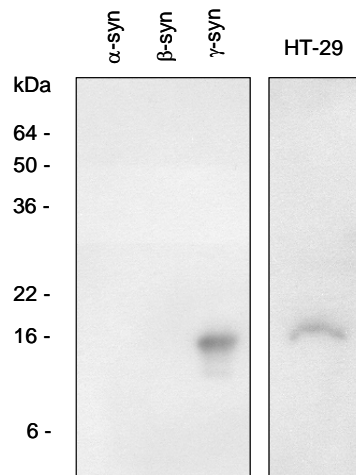


**Product:** Anti-Human  $\gamma$ -Synuclein (BCSG-1) Polyclonal Antibody  
**Catalog #:** 01-2414  
**Amount:** 200  $\mu$ l

**CATEGORY:** Rabbit Polyclonal  
**IMMUNOGEN:** Recombinant human  $\gamma$ -Synuclein purified from E. coli  
**FORM:** Affinity purified (Protein A chromatography) from mouse ascitic fluids  
**SPECIFICITY:** This antibody is specific for  $\gamma$ -synuclein and does not cross-react with  $\alpha$ - and  $\beta$ -synuclein.  
**APPLICATION:** ELISA, Western Blot  
**WORKING DILUTION:** Western blot analysis is 1:500 ~ 1:2,000  
Recommended starting dilution is 1:1,000  
**BUFFER:** Phosphate-Buffered Saline (pH 7.4) with 0.02% thimerosal  
**STORAGE:** -20°C (aliquot), Avoid repeated freeze and thaw cycles.



**Reference:**

Liu H. et. al. (2005) Cancer Res. 65, 7635-7643  
Ji. et al. (1997) ) Cancer Res. 57, 759-764  
George, J.M. (2001) Genome Biol. 3, 3002.1-3002.6

This product is sold for laboratory research use or further manufacturing only and should not be used for human therapeutic or diagnostic applications. The information presented is believed to be accurate; however, said information and products are offered without warranty or guarantee since the ultimate conditions of use and the variability of the materials treated are beyond our control. Nothing disclosed herein is to be construed as a recommendation to use our products in violation of any patents. Under no circumstances shall ARP American Research Products, Inc. be liable for damages, whether consequential, compensatory, incidental or special, strict liability or negligence, breach of warranty or any other theory arising out of the use of the products available from ARP American Research Products, Inc. Nothing contained herein warrants that the use of the products will not infringe on the claims of any patents covering the product itself or the use thereof in combination with other products or in the operation of any process.

489 Common Street, Belmont, MA 02478, USA; Email: [info@arpl.com](mailto:info@arpl.com) or [staff@arpl.com](mailto:staff@arpl.com)  
Phone: 800-832-2611 or 617-489-1120 Fax: 888-832-2613 or 617-489-5120