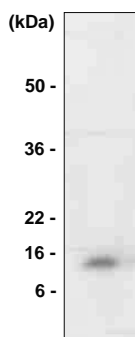


Product: Anti-MIF, human
Catalog #: 01-2443
Amount: 200 µl

CATEGORY: Mouse Monoclonal
CLONE: 4E4
IMMUNOGLOBULIN SUBTYPE: Mouse IgG1, kappa
IMMUNOGEN: Recombinant human MIF (aa 1-114), *E. coli*
FORM: Affinity purified (Protein G) from mouse ascites
SPECIFICITY: Human MIF
APPLICATION: ELISA, Western Blot
CONCENTRATION: 0.1mg/ml
WORKING DILUTION: Western blot (ECL) analysis is 1:100 ~ 1:400.
Recommended starting dilution is 1:100.
BUFFER: Phosphate-Buffered Saline (pH 7.4) with 0.02% thimerosal
STORAGE: -20°C (aliquot), Avoid repeated freeze and thaw cycles.



Western Blot Analysis

Reference:

Gregory KE., *et al.* (2005) *J. Biol. Chem.* 280, 27970-27980.
Sampath TK., *et al.* (1990) *J. Biol. Chem.* 265, 13198-13205
Godin RE., *et al.* (1998) *Development.* 125, 3473-3482
Groppe J., *et al.* (2002) *Nature.* 420, 636-642

This product is sold for laboratory research use or further manufacturing only and should not be used for human therapeutic or diagnostic applications. The information presented is believed to be accurate; however, said information and products are offered without warranty or guarantee since the ultimate conditions of use and the variability of the materials treated are beyond our control. Nothing disclosed herein is to be construed as a recommendation to use our products in violation of any patents. Under no circumstances shall ARP American Research Products, Inc. be liable for damages, whether consequential, compensatory, incidental or special, strict liability or negligence, breach of warranty or any other theory arising out of the use of the products available from ARP American Research Products, Inc. Nothing contained herein warrants that the use of the products will not infringe on the claims of any patents covering the product itself or the use thereof in combination with other products or in the operation of any process.

489 Common Street, Belmont, MA 02478, USA; Email: info@arp1.com or staff@arp1.com
Phone: 800-832-2611 or 617-489-1120 Fax: 888-832-2613 or 617-489-5120