

Product: Anti-NKp30(NCR)
Catalog #: 01-2454
Amount: 200 µl

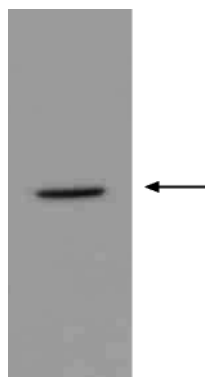
CATEGORY: Mouse Monoclonal
CLONE: γ4E6
IMMUNOGLOBULIN SUBTYPE: Mouse IgG1
IMMUNOGEN: Recombinant human NKp30(NCR), E.coli
FORM: Affinity Purified (Protein G chromatography) from hybridoma supernatant

ANTIGEN RECOGNIZED
IN SPECIES (tested so far): Human
SPECIFICITY: NKp30 (NCR)
APPLICATION: Immunoblotting
ELISA

CONCENTRATION: 0.1 mg/ml
WORKING DILUTION: Western blotting: 1:100-1:400
ELISA: starting dilution: 1:200
The optimal dilution should be determined by serial dilution

BUFFER: PBS, pH 7.4, containing 0.05% sodium azide
STORAGE: 2-8°C for immediate use, or at -20°C (aliquot)

REFERENCE:
Alessandro Moretta *et al.*, 2001 *Annu. Rev. Immunol.* 19:197-223
Daniela Pende., *et al.*, 1999 *J Exp. Med.* 15:1505-1516



Western Blot Analysis
Arrow indicates human recombinant protein NKp30 (residues 19~138)

This product is sold for laboratory research use or further manufacturing only and should not be used for human therapeutic or diagnostic applications. The information presented is believed to be accurate; however, said information and products are offered without warranty or guarantee since the ultimate conditions of use and the variability of the materials treated are beyond our control. Nothing disclosed herein is to be construed as a recommendation to use our products in violation of any patents. Under no circumstances shall ARP American Research Products, Inc. be liable for damages, whether consequential, compensatory, incidental or special, strict liability or negligence, breach of warranty or any other theory arising out of the use of the products available from ARP American Research Products, Inc. Nothing contained herein warrants that the use of the products will not infringe on the claims of any patents covering the product itself or the use thereof in combination with other products or in the operation of any process.