

Product: Anti-LYVE-1, human
Catalog #: 01-2455
Amount: 200 µl

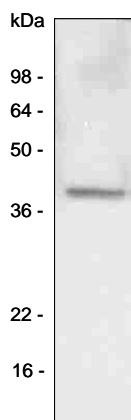
CATEGORY: Mouse Monoclonal
CLONE: 4G1
IMMUNOGLOBULIN SUBTYPE: Mouse IgG2b
IMMUNOGEN: Recombinant human LYVE-1 (25-235 aa), E.coli
FORM: Affinity Purified (Protein G chromatography) from hybridoma supernatant

ANTIGEN RECOGNIZED IN SPECIES (tested so far): Human
SPECIFICITY: LYVE-1
POSITIVE CONTROL: Human lung carcinoma cell lysate
APPLICATION: Immunoblotting
ELISA

CONCENTRATION: 0.1 mg/ml
WORKING DILUTION: Western blotting: 1:100-1:200
ELISA: starting dilution: 1:200
The optimal dilution should be determined by serial dilution

BUFFER: PBS, pH 7.4, containing 0.05% sodium azide
STORAGE: 2-8°C for immediate use, or at -20°C (aliquot)

REFERENCE:
Koukourakis MI et al. (2006) J. Clin. Pathol. 58, 202-206
Chen L. et al. (2005) Invest. Ophthalmol Vis. Sci. 46, 4536-4540
Banerji S. et al. (1999) J. Cell Biol. 144, 789-801



Western Blot Analysis

This product is sold for laboratory research use or further manufacturing only and should not be used for human therapeutic or diagnostic applications. The information presented is believed to be accurate; however, said information and products are offered without warranty or guarantee since the ultimate conditions of use and the variability of the materials treated are beyond our control. Nothing disclosed herein is to be construed as a recommendation to use our products in violation of any patents. Under no circumstances shall ARP American Research Products, Inc. be liable for damages, whether consequential, compensatory, incidental or special, strict liability or negligence, breach of warranty or any other theory arising out of the use of the products available from ARP American Research Products, Inc. Nothing contained herein warrants that the use of the products will not infringe on the claims of any patents covering the product itself or the use thereof in combination with other products or in the operation of any process.