

Product: Anti-Synuclein gamma
Catalog #: 01-2514
Amount: 200 µl

CATEGORY: Rabbit Polyclonal
IMMUNOGLOBULIN SUBTYPE: IgG
IMMUNOGEN: Recombinant human gamma synuclein, E. coli
FORM: Affinity Purified (Protein A chromatography) from serum, in Phosphate-Buffered Saline (pH 7.4) containing 0.02% thimerosal

ANTIGEN RECOGNIZED
IN SPECIES (tested so far): Human
SPECIFICITY: Gamma synuclein, no cross reactivity with alpha or Beta synuclein

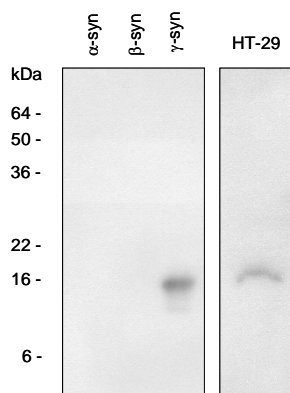
APPLICATION: Immunoblotting
ELISA

CONCENTRATION: 0.1 mg/ml
WORKING DILUTION: Starting dilution: 1:100
The optimal dilution should be determined by serial dilution

BUFFER: PBS, pH 7.4, containing 0.02% Thimerosal
STORAGE: 2-8°C for immediate use, or at -20°C (aliquot)

REFERENCE:

Liu H. *et al.* (2005) *Cancer Res.* 65, 7635-7643
Ji. *et al.* (1997) *Cancer Res.* 57, 759-764
George, J.M. (2001) *Genome Biol.* 3, 3002.1-3002.6



Western blot analysis

This product is sold for laboratory research use or further manufacturing only and should not be used for human therapeutic or diagnostic applications. The information presented is believed to be accurate; however, said information and products are offered without warranty or guarantee since the ultimate conditions of use and the variability of the materials treated are beyond our control. Nothing disclosed herein is to be construed as a recommendation to use our products in violation of any patents. Under no circumstances shall ARP American Research Products, Inc. be liable for damages, whether consequential, compensatory, incidental or special, strict liability or negligence, breach of warranty or any other theory arising out of the use of the products available from ARP American Research Products, Inc. Nothing contained herein warrants that the use of the products will not infringe on the claims of any patents covering the product itself or the use thereof in combination with other products or in the operation of any process.