

Product: p38 β , Active

Catalog #: 02-2028

Amount: 5 μ g

Product Description

Recombinant full-length human p38beta was expressed by baculovirus in Sf9 insect cells using a N-terminal GST tag. The gene accession number is [NM_002751](#).

Gene Aliases

MAPK11; SAPK2; p38-2; PRKM11; SAPK2B; p38b; P38b2

Formulation

Recombinant protein stored in 50mM Tris-HCl, pH 7.5, 150mM NaCl, 0.25mM DTT, 0.1mM EGTA, 0.1mM EDTA, 0.1mM PMSF, 25% glycerol.

Storage and Stability

Store product at -70°C. For optimal storage, aliquot target into smaller quantities after centrifugation and store at recommended temperature. For most favorable performance, avoid repeated handling and multiple freeze/thaw cycles.

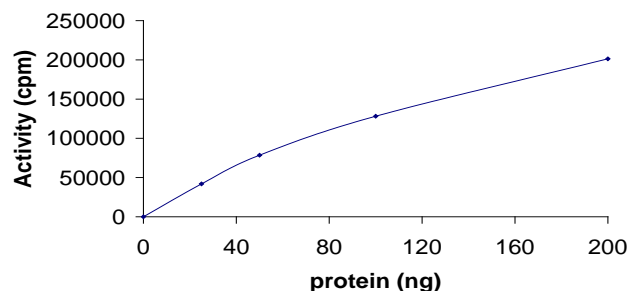
Scientific Background

p38-beta is a member of the p38 MAP kinase family and is activated by both proinflammatory cytokines and environmental stress (1). The p38-beta is activated through its phosphorylation by MAP kinase kinases (MKKs), preferably by MKK6. Transcription factor ATF2/CREB2 has been shown to be a substrate of this kinase (2). Alternatively spliced transcript variants encoding the same protein have been observed.

References

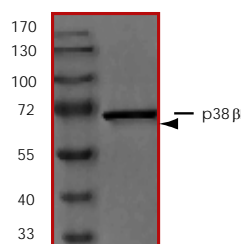
- Jiang, Y. et al: Characterization of the structure and function of a new mitogen-activated protein kinase (p38-beta). *J. Biol. Chem.* 271: 17920-17926, 1996.
- Stein, B. et al: p38-2, a novel mitogen-activated protein kinase with distinct properties. *J. Biol. Chem.* 272: 19509-19517, 1997.

Specific Activity



The specific activity of P38BETA was determined to be **123 nmol /min/mg** as per activity assay protocol.

Purity



The purity was determined to be **>90%** by densitometry, Approx. MW **71kDa**.

p38 β , Active

Full-length recombinant protein expressed in Sf9 cells

Catalog Number	02-2028
Quantity	5 μ g
Specific Activity	123 nmol/min/mg
Specific Lot Number	K361-1
Purity	>90%
Format	5 μ g in 50 μ l
Concentration	0.1 μ g/ μ l
Stability	1yr At -70°C from date of shipment
Storage & gShipping	Store product at -70°C. For optimal storage, aliquot target into smaller quantities after centrifugation and store at recommended temperature. For most favorable performance, avoid repeated handling and multiple freeze/thaw cycles. Product shipped on dry ice.

This product is sold for laboratory research use or further manufacturing only and should not be used for human therapeutic or diagnostic applications. The information presented is believed to be accurate; however, said information and products are offered without warranty or guarantee since the ultimate conditions of use and the variability of the materials treated are beyond our control. Nothing disclosed herein is to be construed as a recommendation to use our products in violation of any patents. Under no circumstances shall ARP American Research Products, Inc. be liable for damages, whether consequential, compensatory, incidental or special, strict liability or negligence, breach of warranty or any other theory arising out of the use of the products available from ARP American Research Products, Inc. Nothing contained herein warrants that the use of the products will not infringe on the claims of any patents covering the product itself or the use thereof in combination with other products or in the operation of any process.

Activity Assay Protocol

Reaction Components

Active Kinase (Catalog #: 02-2028)

Active p38beta (0.1µg/µl) diluted with Kinase Dilution Buffer III (Catalog #: K23-09) and assayed as outlined in sample activity plot. (Note: these are suggested working dilutions and it is recommended that the researcher perform a serial dilution of Active p38beta for optimal results).

Kinase Dilution Buffer, pH 7.2 (Catalog #: K23-09)

Kinase Assay Buffer I (Catalog #: K01-09) diluted at a 1:4 ratio (5X dilution) with 50ng/µl BSA solution.

Kinase Assay Buffer I, pH 7.2 (Catalog #: K01-09)

Buffer components: 25mM MOPS, 12.5mM β-glycerol-phosphate, 25mM , 5mM EGTA, 2mM EDTA. Add 0.25mM DTT to Kinase Assay Buffer prior to use.

[³²P]-ATP Assay Cocktail

Prepare 250µM [³²P]-ATP Assay Cocktail in a designated radioactive working area by adding the following components: 150µl of 10mM ATP Stock Solution (Catalog #: A50-09), 100µl [³²P]-ATP (1mCi/100µl), 5.75ml of Kinase Assay Buffer (Catalog #: K01-09). Store 1ml aliquots at –.

10mM ATP Stock Solution (Catalog #: A50-09)

Prepare ATP stock solution by dissolving 55mg of ATP in 10ml of Kinase Assay Buffer (Catalog #: K01-09). Store 200µl aliquots at –.

Substrate

ATF2 substrate (Catalog #: A10-55) prepared in buffer (50mM Tris-HCl, pH 7.2, 50mM , 5mM EDTA and 0.25mM DTT) to a final concentration of 0.5mg/ml.

Assay Protocol

- Step 1. Thaw [³²P]-ATP Assay Cocktail in shielded container in a designated radioactive working area.
- Step 2. Thaw the Active p38alpha, Kinase Assay Buffer, Substrate and Enzyme Dilution Buffer on ice.
- Step 3. In a pre-cooled microfuge tube, add the following reaction components bringing the initial reaction volume up to 20µl:
 - Component 1. 10µl of diluted Active p38beta (Catalog #02-2028).
 - Component 2. 10µl of 0.5mg/ml ATF2 substrate (Catalog #: A10-55G).
- Step 4. Set up the blank control as outlined in step 3, excluding the addition of the substrate. Replace the substrate with an equal volume of distilled H₂O.
- Step 5. Initiate the reaction by the addition of 5µl [³²P]-ATP Assay Cocktail bringing the final volume up to 25µl and incubate the mixture in a water bath at 30°C for 15 minutes.
- Step 6. After the 15 minute incubation period, terminate the reaction by spotting 20µl of the reaction mixture onto individual pre-cut strips of phosphocellulose P81 paper.
- Step 7. Air dry the pre-cut P81 strip and sequentially wash in a 1% phosphoric acid solution (dilute 10ml of phosphoric acid and make a 1L solution with distilled H₂O) with constant gentle stirring. It is recommended that the strips be washed a total of 3 intervals for approximately 10 minutes each.
- Step 8. Count the radioactivity on the P81 paper in the presence of scintillation fluid in a scintillation counter.
- Step 9. Determine the corrected cpm by removing the blank control value (see Step 4) for each sample and calculate the kinase specific activity as outlined below.

Calculation of [³²P]-ATP Specific Activity (SA) (cpm/pmol)

Specific activity (SA) = cpm for 5µl [³²P]-ATP / pmoles of ATP (in 5µl of a 250µM ATP stock solution, i.e., 1250 pmoles)

Kinase Specific Activity (SA) (pmol/min/µg or nmol/min/mg)

Corrected cpm from reaction / [(SA of ³²P-ATP in cpm/pmol)*(Reaction time in min)*(Enzyme amount in µg or mg)]*[(Reaction Volume) / (Spot Volume)]

This product is sold for laboratory research use or further manufacturing only and should not be used for human therapeutic or diagnostic applications. The information presented is believed to be accurate; however, said information and products are offered without warranty or guarantee since the ultimate conditions of use and the variability of the materials treated are beyond our control. Nothing disclosed herein is to be construed as a recommendation to use our products in violation of any patents. Under no circumstances shall ARP American Research Products, Inc. be liable for damages, whether consequential, compensatory, incidental or special, strict liability or negligence, breach of warranty or any other theory arising out of the use of the products available from ARP American Research Products, Inc. Nothing contained herein warrants that the use of the products will not infringe on the claims of any patents covering the product itself or the use thereof in combination with other products or in the operation of any process.



MATERIAL SAFETY DATA SHEET

Article 1 - Product Identification and Use

Product Name: p38 β , Active

Catalog # 02-2027

This product is sold only for research use by qualified laboratory personnel, and is not to be used as a drug, medical device, food additive, cosmetic, nor household chemical. It is not to be used in diagnostic, therapeutic, consumer, agricultural, nor pesticidal applications.

Article 2 - Hazardous Ingredients

NOT AVAILABLE. We are not aware of any hazards associated with this product or its ingredients, but the chemical, physical, and toxicological properties of this product have not been investigated thoroughly. Observe normal laboratory precautions.

Article 3 - Physical Data

This product consists of purified protein in Tris-HCl buffer shipped on dry ice. The physical properties of this product have not been investigated thoroughly.

Article 4 - Fire and Explosion Hazard

NOT APPLICABLE

Article 5 - Reactivity Data

NOT APPLICABLE

Article 6 – Toxicologically Data

May be harmful by inhalation, ingestion, or skin absorption. The toxicological properties of this product have not been investigated thoroughly. Exercise due caution.

Article 7 - Preventative Measures

Wear chemical safety goggles and compatible chemical-resistant gloves. Avoid inhalation, contact with eyes, skin or clothing.

*****MULTIPLE COMPONENT SPILL OR LEAK PROCEDURES*****

- Wear protective equipment.
- Absorb on sand or vermiculite and place in closed containers for disposal.
- Observe all federal, state and local environmental regulations.

Article 8 - First Aid Measures

- If swallowed, wash out mouth with water, provided person is conscious. Call a physician.
- In case of skin contact, flush with copious amounts of water for at least 15 minutes. Remove contaminated clothing and shoes. If a rash or other irritation develops, call a physician.
- If inhaled, remove to fresh air. If breathing becomes difficult, call a physician.
- In case of eye contact, flush with copious amounts of water for at least 15 minutes while separating the eyelids with fingers. Call a physician.

Article 9 - Preparation

Prepared By:

Phone #:

The above information is believed to be correct but does not purport to be all-inclusive and shall be used only as a guide. SignalChem shall not be held liable for any damage resulting from handling or from contact with the above product. See the Technical Specification, Packing Slip, Invoice, and Product Catalogue for additional terms and conditions of sale.

This product is sold for laboratory research use or further manufacturing only and should not be used for human therapeutic or diagnostic applications. The information presented is believed to be accurate; however, said information and products are offered without warranty or guarantee since the ultimate conditions of use and the variability of the materials treated are beyond our control. Nothing disclosed herein is to be construed as a recommendation to use our products in violation of any patents. Under no circumstances shall ARP American Research Products, Inc. be liable for damages, whether consequential, compensatory, incidental or special, strict liability or negligence, breach of warranty or any other theory arising out of the use of the products available from ARP American Research Products, Inc. Nothing contained herein warrants that the use of the products will not infringe on the claims of any patents covering the product itself or the use thereof in combination with other products or in the operation of any process.