

Product: PKC γ , Active

Catalog #: 02-2047

Amount: 5 μ g

Product Description

Recombinant full-length human PKC γ was expressed by baculovirus in Sf9 insect cells using a N-terminal GST tag. The gene accession number is [NM_002739](#).

Gene Aliases

PKCL; PKC-L; PRKCL; MGC5363; PRKCH

Formulation

Recombinant protein stored in 50mM Tris-HCl, pH 7.5, 150mM NaCl, 0.25mM DTT, 0.1mM EGTA, 0.1mM EDTA, 0.1mM PMSF, 25% glycerol.

Storage and Stability

Store product at -70°C . For optimal storage, aliquot target into smaller quantities after centrifugation and store at recommended temperature. For most favorable performance, avoid repeated handling and multiple freeze/thaw cycles.

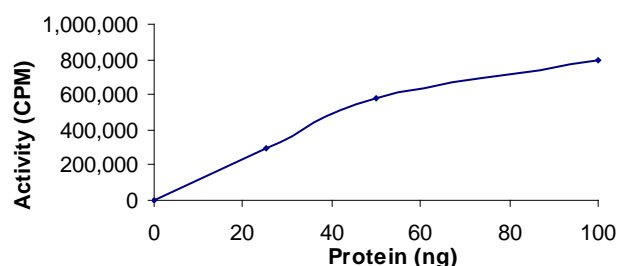
Scientific Background

PKC γ is a member of the protein kinase C (PKC) family of serine- and threonine-specific protein kinases that can phosphorylate a wide variety of protein targets known to be involved in diverse cellular signaling pathways. In the brain, PKC γ is translocated to cell membranes during ischemia and is rapidly removed or degraded during the second otherwise lethal ischemic insult in preconditioned brains. This suggest that ischemic preconditioning enhances downregulation of cell signaling mediated by PKC γ and may thereby provide neuroprotection (1).

References

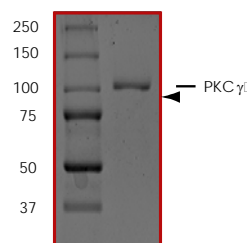
1. Shamloo, M. et al: Rapid decline in protein kinase Cgamma levels in the synaptosomal fraction of rat hippocampus after ischemic preconditioning. Neuroreport. 1999 Apr 6;10(5):931-5.

Specific Activity



The specific activity of PKCgamma was determined to be **512 nmol /min/mg** as per activity assay protocol.

Purity



The purity was determined to be **>80%** by densitometry. Approx. MW **105kDa**.

PKC γ , Active

Full-length recombinant protein expressed in Sf9 cells

Catalog Number	02-2047
Quantity	5 μ g
Specific Activity	512 nmol/min/mg
Specific Lot Number	B096-1
Purity	>80%
Format	5 μ g in 50 μ l
Concentration	0.1 μ g/ μ l
Stability	1yr At -70°C from date of shipment
Storage & Shipping	Store product at -70°C . For optimal storage, aliquot target into smaller quantities after centrifugation and store at recommended temperature. For most favorable performance, avoid repeated handling and multiple freeze/thaw cycles. Product shipped on dry ice.

This product is sold for laboratory research use or further manufacturing only and should not be used for human therapeutic or diagnostic applications. The information presented is believed to be accurate; however, said information and products are offered without warranty or guarantee since the ultimate conditions of use and the variability of the materials treated are beyond our control. Nothing disclosed herein is to be construed as a recommendation to use our products in violation of any patents. Under no circumstances shall ARP American Research Products, Inc. be liable for damages, whether consequential, compensatory, incidental or special, strict liability or negligence, breach of warranty or any other theory arising out of the use of the products available from ARP American Research Products, Inc. Nothing contained herein warrants that the use of the products will not infringe on the claims of any patents covering the product itself or the use thereof in combination with other products or in the operation of any process.

Activity Assay Protocol

Reaction Components

Active Kinase (Catalog #: 02-2047)

Active PKC γ (0.1 μ g/ μ l) diluted with Kinase Dilution Buffer (Catalog #: K21-09) and assayed as outlined in sample activity plot. (Note: these are suggested working dilutions and it is recommended that the researcher perform a serial dilution of Active PKC γ for optimal results).

Kinase Dilution Buffer, pH 7.2 (Catalog #: K21-09)

Kinase Assay Buffer I (Catalog #: K01-09) diluted at a 1:4 ratio (5X dilution) with distilled .

Kinase Assay Buffer I, pH 7.2 (Catalog #: K01-09)

Buffer components: 25mM MOPS, 12.5mM β -glycerol-phosphate, 25mM , 5mM EGTA, 2mM EDTA. Add 0.25mM DTT to Kinase Assay Buffer prior to use.

[γ]-ATP Assay Cocktail

Prepare 250 μ M [γ]-ATP Assay Cocktail in a designated radioactive working area by adding the following components: 150 μ l of 10mM ATP Stock Solution (Catalog #: A50-09), 100 μ l [32 P]-ATP (1mCi/100 μ l), 5.75ml of Kinase Assay Buffer (Catalog #: K01-09). Store 1ml aliquots at -20°C.

10mM ATP Stock Solution (Catalog #: A50-09)

Prepare ATP stock solution by dissolving 55mg of ATP in 10ml of Kinase Assay Buffer (Catalog #: K01-09). Store 200 μ l aliquots at -20°C.

Substrate

PKC synthetic peptide substrate (ERM γ PRKRQGSVRRRV) diluted in distilled to a final concentration of 1mg/ml.

Assay Protocol

- Step 1. Thaw [32 P]-ATP Assay Cocktail in shielded container in a designated radioactive working area.
- Step 2. Thaw the Active PKC γ , Kinase Assay Buffer, Substrate and Enzyme Dilution Buffer on ice.
- Step 3. In a pre-cooled microfuge tube, add the following reaction components bringing the initial reaction volume up to 20 μ l:
 - Component 1. 10 μ l of diluted Active PKC γ (Catalog # 02-2047)
 - Component 2. 7.5 μ l of 1mg/ml stock solution of substrate
 - Component 3. 2.5 μ l lipid activator (0.5 mg/ml phosphatidylserine and 0.05 mg/ml diacylglycerol in 20 mM MOPS, pH 7.2, containing 1 mM CaCl $_2$). Sonicate lipid for 1 minute prior to use.
- Step 4. Set up the blank control as outlined in step 3, excluding the addition of the substrate. Replace the substrate with an equal volume of distilled H $_2$ O.
- Step 5. Initiate the reaction by the addition of 5 μ l [32 P]-ATP Assay Cocktail bringing the final volume up to 25 μ l and incubate the mixture in a water bath at 30°C for 15 minutes.
- Step 6. After the 15 minute incubation period, terminate the reaction by spotting 20 μ l of the reaction mixture onto individual pre-cut strips of phosphocellulose P81 paper.
- Step 7. Air dry the pre-cut P81 strip and sequentially wash in a 1% phosphoric acid solution (dilute 10ml of phosphoric acid and make a 1L solution with distilled H $_2$ O) with constant gentle stirring. It is recommended that the strips be washed a total of 3 intervals for approximately 10 minutes each.
- Step 8. Count the radioactivity on the P81 paper in the presence of scintillation fluid in a scintillation counter.
- Step 9. Determine the corrected cpm by removing the blank control value (see Step 4) for each sample and calculate the kinase specific activity as outlined below.

Calculation of [P^{32}]-ATP Specific Activity (SA) (cpm/pmol)

Specific activity (SA) = cpm for 5 μ l [32 P]-ATP / pmoles of ATP (in 5 μ l of a 250 μ M ATP stock solution, i.e., 1250 pmoles)

Kinase Specific Activity (SA) (pmol/min/ μ g or nmol/min/mg)

Corrected cpm from reaction / [(SA of 32 P-ATP in cpm/pmol)*(Reaction time in min)*(Enzyme amount in μ g or mg)]*[(Reaction Volume) / (Spot Volume)]

This product is sold for laboratory research use or further manufacturing only and should not be used for human therapeutic or diagnostic applications. The information presented is believed to be accurate; however, said information and products are offered without warranty or guarantee since the ultimate conditions of use and the variability of the materials treated are beyond our control. Nothing disclosed herein is to be construed as a recommendation to use our products in violation of any patents. Under no circumstances shall ARP American Research Products, Inc. be liable for damages, whether consequential, compensatory, incidental or special, strict liability or negligence, breach of warranty or any other theory arising out of the use of the products available from ARP American Research Products, Inc. Nothing contained herein warrants that the use of the products will not infringe on the claims of any patents covering the product itself or the use thereof in combination with other products or in the operation of any process.

**MATERIAL SAFETY DATA SHEET****Article 1 - Product Identification and Use****Product Name: PKC γ , Active****Catalog # P66-10G-20**

This product is sold only for research use by qualified laboratory personnel, and is not to be used as a drug, medical device, food additive, cosmetic, nor household chemical. It is not to be used in diagnostic, therapeutic, consumer, agricultural, nor pesticidal applications.

Manufacturer's Name: SignalChem Pharmaceuticals Inc.
Street Address: 570-5600 Parkwood Way
City, Prov. Postal Code: Richmond, BC, V6V 2M2
Fax: 604-232-4601
EMERGENCY PHONE: 604-232-4600

Article 2 - Hazardous Ingredients

NOT AVAILABLE. We are not aware of any hazards associated with this product or its ingredients, but the chemical, physical, and toxicological properties of this product have not been investigated thoroughly. Observe normal laboratory precautions.

Article 3 - Physical Data

This product consists of purified protein in Tris-HCl buffer shipped on dry ice. The physical properties of this product have not been investigated thoroughly.

Article 4 - Fire and Explosion Hazard

NOT APPLICABLE

Article 5 - Reactivity Data

NOT APPLICABLE

Article 6 – Toxicologically Data

May be harmful by inhalation, ingestion, or skin absorption. The toxicological properties of this product have not been investigated thoroughly. Exercise due caution.

Article 7 - Preventative Measures

Wear chemical safety goggles and compatible chemical-resistant gloves. Avoid inhalation, contact with eyes, skin or clothing.

*****MULTIPLE COMPONENT SPILL OR LEAK PROCEDURES*****

- Wear protective equipment.
- Absorb on sand or vermiculite and place in closed containers for disposal.
- Observe all federal, state and local environmental regulations.

Article 8 - First Aid Measures

- If swallowed, wash out mouth with water, provided person is conscious. Call a physician.
- In case of skin contact, flush with copious amounts of water for at least 15 minutes. Remove contaminated clothing and shoes. If a rash or other irritation develops, call a physician.
- If inhaled, remove to fresh air. If breathing becomes difficult, call a physician.
- In case of eye contact, flush with copious amounts of water for at least 15 minutes while separating the eyelids with fingers. Call a physician.

Article 9 - Preparation

Prepared By:

Phone #:

The above information is believed to be correct but does not purport to be all-inclusive and shall be used only as a guide. SignalChem shall not be held liable for any damage resulting from handling or from contact with the above product. See the Technical Specification, Packing Slip, Invoice, and Product Catalogue for additional terms and conditions of sale.

This product is sold for laboratory research use or further manufacturing only and should not be used for human therapeutic or diagnostic applications. The information presented is believed to be accurate; however, said information and products are offered without warranty or guarantee since the ultimate conditions of use and the variability of the materials treated are beyond our control. Nothing disclosed herein is to be construed as a recommendation to use our products in violation of any patents. Under no circumstances shall ARP American Research Products, Inc. be liable for damages, whether consequential, compensatory, incidental or special, strict liability or negligence, breach of warranty or any other theory arising out of the use of the products available from ARP American Research Products, Inc. Nothing contained herein warrants that the use of the products will not infringe on the claims of any patents covering the product itself or the use thereof in combination with other products or in the operation of any process.