

Product: NSE (Neuron-Specific Enolase, 1-434aa), human
Catalog #: 05-52063R
Amount: 10 µg

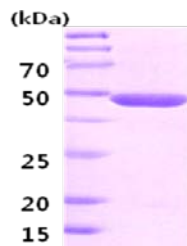
DESCRIPTION:

Neuron-specific enolase (NSE) is a glycolytic isoenzyme which is located in central and peripheral neurons and neuroendocrine cells. This enzyme is released into the CSF when neural tissue is injured. Neoplasms derived from neural or neuroendocrine tissue may release NSE into the blood. NSE is a useful substance that has been detected in patients with certain tumors, namely: neuroblastoma, small cell lung cancer, medullary thyroid cancer, carcinoid tumors, pancreatic endocrine tumors, and melanoma.

Synonyms: Enolase 2 (gamma, neuronal)

AA Sequence:

MSIEKIWARE ILDSRGNPTV EVDLYTAKGL FRAAVPSGAS TGIYEALELR DGDKQRYLGK
 GVLKAVDHIN STIAPALISS GLSVVEQEKL DNLMLELDGT ENKSKFGANA ILGVSLAVCK
 AGAAERELPL YRHIAQLAGN SDLILPVPF NVINGGSHAG NKLAMQEFMI LPVGAESFRD
 AMRLGAEVYH TLKGVKDKY GKDATNVGDE GGFAPNILEN SEALELVKEA IDKAGYTEKI
 VIGMDVAASE FYRDGKYDLD FKSPTDPSRY ITGDQLGALY QDFVRDYPVV SIEDPFDQDD
 WAAWSKFTAN VGIQIVGDDL TVTNPKRIER AVEEKACNCL LLKVNQIGSV TEAIQACKLA
 QENGWGMVVS HRSGETEDTF IADLVVGLCT GQIKTGAPCR SERLAKYNQL MRIEEELGDE
 ARFAGHNFRN PSVL



15% SDS-PAGE (3µg)

SOURCE: Recombinant, *E. coli* expression system
MOLECULAR WEIGHT: 47 kDa (434 aa)
PURITY: > 95% by SDS PAGE
FORM: Purified, in 20mM Tris pH7.5, 0.1M KCl, 5mM MgSO4
ENDOTOXIN: < 1.0 EU per 1 µg of protein (determined by LAL method)
CONCENTRATION: 1 mg/ml (Bradford Assay)
STORAGE: -20°C (aliquot), Avoid repeated freeze and thaw cycles

REFERENCE:

T Kirino., *et al.*(1983). *J. Neuroscience.* **3**, 915-923
 Johnson DH., *et al.*(1984). *Cancer Res.* **44**(11):5409-5414

This product is sold for laboratory research use or further manufacturing only and should not be used for human therapeutic or diagnostic applications. The information presented is believed to be accurate; however, said information and products are offered without warranty or guarantee since the ultimate conditions of use and the variability of the materials treated are beyond our control. Nothing disclosed herein is to be construed as a recommendation to use our products in violation of any patents. Under no circumstances shall ARP American Research Products, Inc. be liable for damages, whether consequential, compensatory, incidental or special, strict liability or negligence, breach of warranty or any other theory arising out of the use of the products available from ARP American Research Products, Inc. Nothing contained herein warrants that the use of the products will not infringe on the claims of any patents covering the product itself or the use thereof in combination with other products or in the operation of any process.