

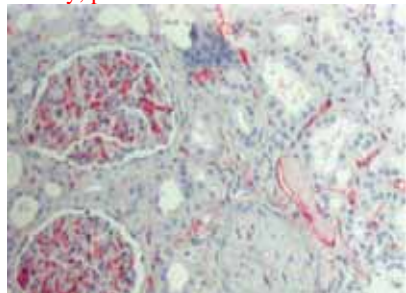
**Product:** Anti- Human C4d  
**Catalog #:** 12-5000  
**Amount:** 250 µl

**CATEGORY:** Rabbit polyclonal  
**IMMUNOIGEN:** Synthetic peptide specific for human complement C4d conjugated to KLH (keyhole limpet hemocyanin)  
**FORM:** Affinity Purified IgG  
**CONCENTRATION:** 0.2 mg/ml  
**SPECIFICITY:** Human complement split product C4d  
**ANTIGEN RECOGNIZED IN SPECIES (tested so far):** Human  
**APPLICATION:** Immunohistochemistry, suitable for frozen section and paraffin embedded tissue. Pretreatment of sample is highly recommended for antigen retrieval.  
**WORKING DILUTION:** min. 1:50  
**STORAGE:** 2-8°C for immediate use, or at -20°C (aliquot). AVOID repeated freezing and thawing.

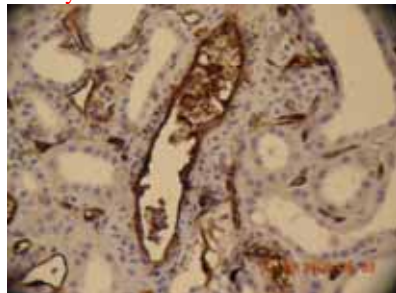
**12-5001 FITC Conjugate for Flow Cytometry (available)**

*For immuno-staining explanation, please see: [Protocol](#).*

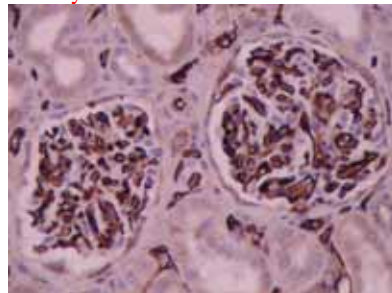
Kidney; permanent red



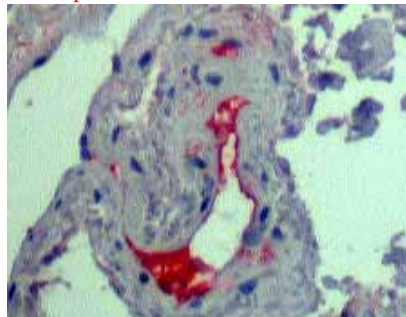
Kidney



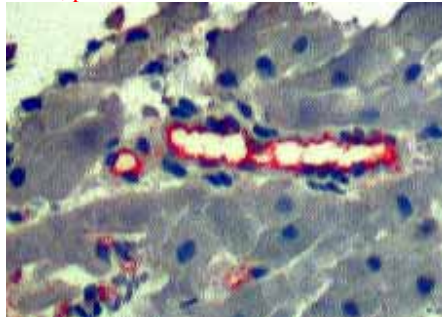
Kidney



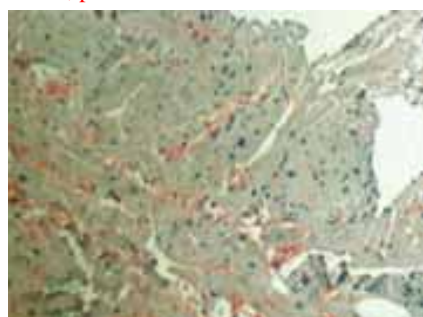
Heart; permanent red



Heart; permanent red



Heart; permanent red



This product is sold for laboratory research use or further manufacturing only and should not be used for human therapeutic or diagnostic applications. The information presented is believed to be accurate; however, said information and products are offered without warranty or guarantee since the ultimate conditions of use and the variability of the materials treated are beyond our control. Nothing disclosed herein is to be construed as a recommendation to use our products in violation of any patents. Under no circumstances shall ARP American Research Products, Inc. be liable for damages, whether consequential, compensatory, incidental or special, strict liability or negligence, breach of warranty or any other theory arising out of the use of the products available from ARP American Research Products, Inc. Nothing contained herein warrants that the use of the products will not infringe on the claims of any patents covering the product itself or the use thereof in combination with other products or in the operation of any process.

489 Common Street, Belmont, MA 02478, USA; Email: info@arp1.com or staff@arp1.com  
Phone: 800-832-2611 or 617-489-1120 Fax: 888-832-2613 or 617-489-5120